

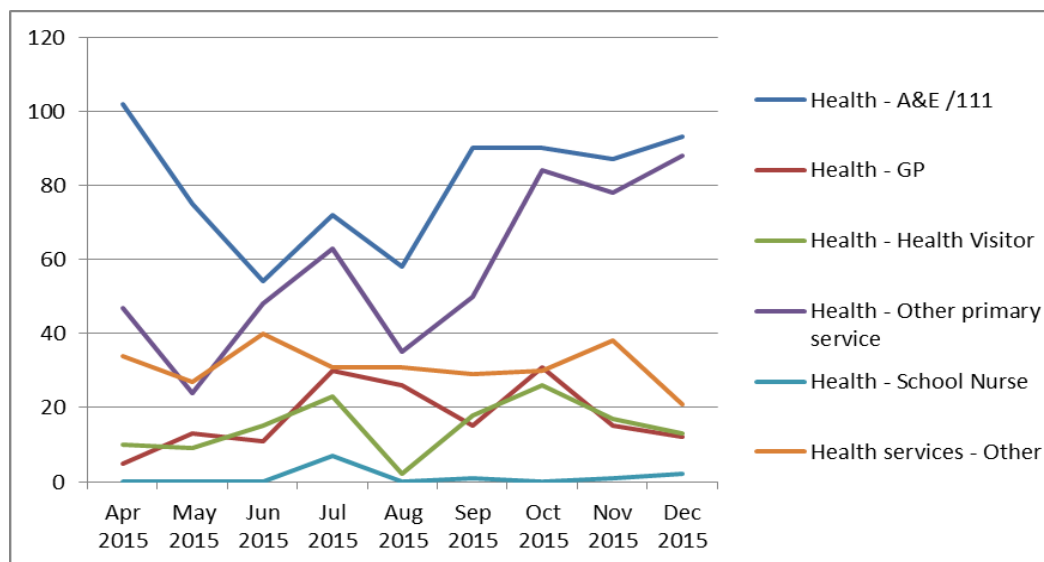
# HWB Children's Improvement Programme Detailed KPIs Report – January 2016

## Context

	April 2014	April 2015	Dec 2015
Number of Children in Need	1748 (Aug)	1670	1723
Number of Children Subject to Child Protection Plan	289	393	429
Total Number of Children Looked After	452	441	444
% Children Looked After Placed in County	48%	47%	47%

## Number of Contacts

Measure	Apr 2015		May 2015		Jun 2015		Jul 2015		Aug 2015		Sep 2015		Oct 2015		Nov 2015		Dec 2015	
Total Number of new contacts	1076	100%	1220	100%	1639	100%	1395	100%	893	100%	1397	100%	1383	100%	1404	100%	1361	100%
Health - A&E /111	102	9%	75	6%	54	3%	72	5%	58	6%	90	6%	90	7%	87	6%	93	7%
Health - GP	5	0%	13	1%	11	1%	30	2%	26	3%	15	1%	31	2%	15	1%	12	1%
Health - Health Visitor	10	1%	9	1%	15	1%	23	2%	2	0%	18	1%	26	2%	17	1%	13	1%
Health - Other primary service	47	4%	24	32%	48	3%	63	5%	35	4%	50	4%	84	6%	78	6%	88	6%
Health - School Nurse	0	0%	0	0%	0	0%	7	1%	0	0%	1	0%	0	0%	1	0%	2	0%
Health services - Other	34	3%	27	2%	40	2%	31	2%	31	3%	29	2%	30	2%	38	3%	21	2%



## % Contacts Submitted on a MARF

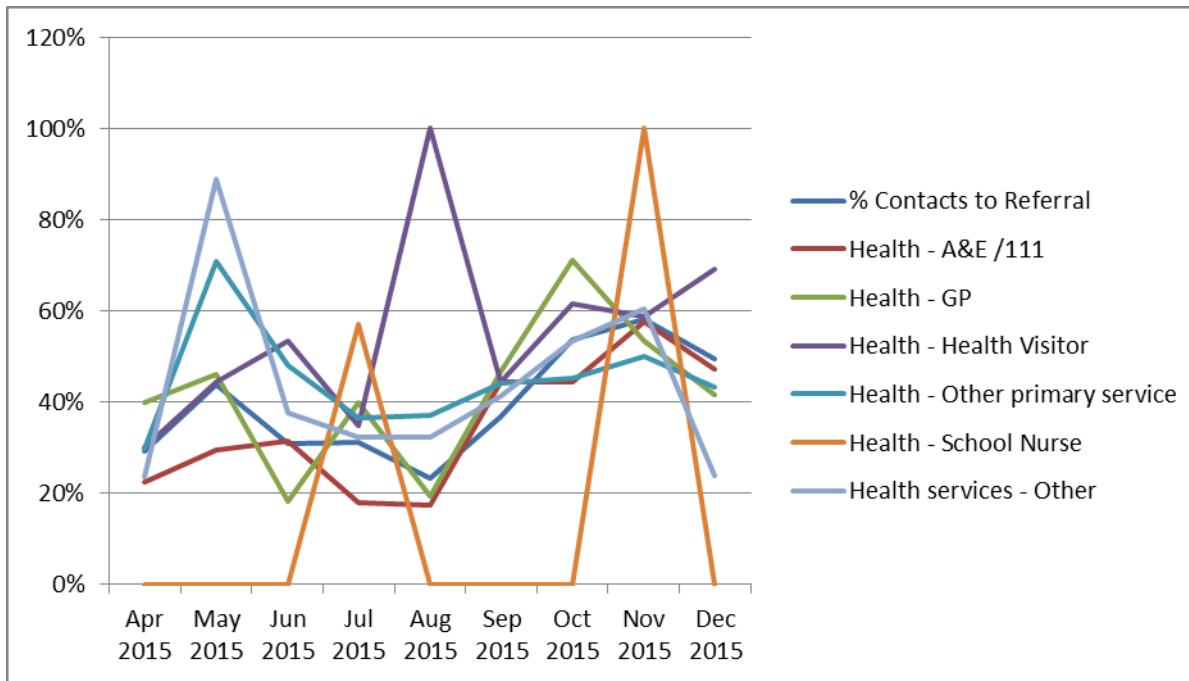
	Sep 2015	Oct 2015	Nov 2015	Dec 2015
% contacts to social care from other agencies are recorded on a multi-agency referral form (MARF) - total	26%	30%	34%	32%
Health - A&E /111	28%	23%	23%	34%
Health - GP	67%	68%	87%	58%
Health - Health Visitor	94%	77%	53%	62%
Health - Other primary service	72%	51%	50%	60%
Health - School Nurse	0%	0%	100%	100%
Health services - Other	69%	60%	76%	71%

*NB: in some instances the actual numbers are very small*

## % Contacts Progressed to Referral

Measure	Apr 2015	May 2015	Jun 2015	Jul 2015	Aug 2015	Sep 2015	Oct 2015	Nov 2015	Dec 2015
% Contacts to Referral	29%	44%	31%	31%	23%	37%	54%	58%	50%
Health - A&E /111	23%	29%	31%	18%	17%	44%	44%	57%	47%
Health - GP	40%	46%	18%	40%	19%	47%	71%	53%	42%
Health - Health Visitor	30%	44%	53%	35%	100%	44%	62%	59%	69%
Health - Other primary service	30%	71%	48%	37%	37%	44%	45%	50%	43%
Health - School Nurse	0%	0%	0%	57%	0%	0%	0%	100%	0%
Health services - Other	24%	89%	38%	32%	32%	41%	53%	61%	24%

*NB: in some instances the actual numbers are very small*



NB: in some instances the actual numbers are very small

### % Repeat Contacts

	Apr 2015	May 2015	Jun 2015	Jul 2015	Aug 2015	Sep 2015	Oct 2015	Nov 2015	Dec 2015
% repeat contacts - total	51%	51%	59%	59%	59%	62%	55%	51%	57%
Health - A&E /111	44%	52%	50%	64%	45%	29%	37%	38%	45%
Health - GP	60%	54%	64%	60%	73%	127%	39%	67%	42%
Health - Health Visitor	30%	22%	73%	43%	50%	6%	50%	76%	31%
Health - Other primary service	40%	46%	33%	70%	43%	30%	44%	40%	50%
Health - School Nurse	0%	0%	0%	43%	0%	0%	0%	0%	100%
Health services - Other	53%	70%	33%	71%	48%	52%	43%	61%	71%

NB: in some instances the actual numbers are very small

## Initial Health Assessments

	Jan 2015	Feb 2015	Mar 2015	Apr 2015	May 2015	Jun 2015	Jul 2015	Aug 2015	Sep 2015	Oct 2015	Nov 2015
% of consent for health assessment submitted to Health within 5 working days of the child becoming looked after	7%	27%	45%	46%	67%	14%	36%	84%	59%	60%	59%
% initial health assessments are completed within 28 days of becoming looked after	7%	36%	30%	47%	41%	64%	64%	58%	41%	90%	76%

*Please Note:*

- *The Ambulance Service is included in the 'A&E/111' figures*
- *Further work is needed when recording agencies as the 'Other primary service' and 'Other' options are currently being used to capture a selection of different agencies including mental health services, midwifery and community psychiatry.*